

Mixology



DESIGN SOLUTIONS™

 **CROSSVILLE®**
ELEVATE YOUR SPACE

Mixology

Mixology has been painstakingly crafted by Crossville artisans to replicate cast metal sculptural pieces as affordable and earth-friendly tile. Each of the exquisitely wrought metal tiles contains a minimum of 50 percent post-consumer recycled content, making the line not only an attractive choice, but the responsible choice for our environment.



Products featured in photo above:

Mixology Iron Nickel Variegated – 4" x 4" Smooth Field Tile, 1-1/4" x 12" Dome Liner, 1/2" x 12" Floral Medallion Liner, 1/2" x 12" Pencil Liner, 6" x 6" Floral Medallion Deco, 6" x 6" Vine Deco

Product featured on front cover:

Mixology Bronze Variegated – 6" x 6" Smooth Field Tile, 6" x 6" Floral Medallion Deco, 6" x 6" Leather Deco, 6" x 6" Links Deco, 6" x 6" Reptile Deco, 6" x 6" Starflower Deco, 6" x 6" Vine Deco



Products featured in photo at right:
Mixology Bronze – 6" x 6" Leather Deco



Products featured in photo above:
Color By Numbers – 4" x 12" Eight Day A Week Satin
Mixology Iron Nickel Variegated – 1/2" x 12" Arrowhead Liner
Mixology Iron Nickel – 1/2" x 12" Reptile Liner, 4" x 4" Starflower Deco
Modern Mythology – 2" x 2" Mosaics Oracle



*Bronze
MX101*

Products featured in photo at left:
 Mixology Bronze
 6" x 6" Starflower Deco,
 1/2" x 12" Arrowhead Liner,
 1/2" x 12" Vine Liner
 1-3/4" x 12" Chair Rail
 6" x 6" Smooth Field Tile



4" x 4", 6" x 6" Smooth Field Tile



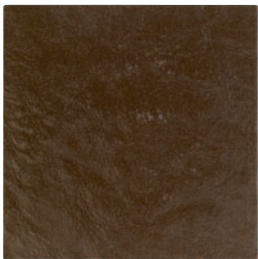
4" x 4", 6" x 6" Floral Medallion Deco



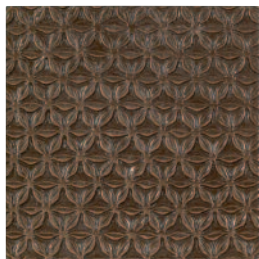
4" x 4", 6" x 6" Vine Deco



4" x 4", 6" x 6" Links Deco



4" x 4", 6" x 6" Leather Deco



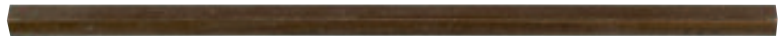
4" x 4", 6" x 6" Starflower Deco



4" x 4", 6" x 6" Reptile Deco



1/2" x 12" Pencil Liner



1/2" x 12" Arrowhead Liner



1/2" x 12" Floral Medallion Liner



1/2" x 12" Vine Liner



1/2" x 12" Links Liner



1/2" x 12" Leather Liner



1/2" x 12" Starflower Liner



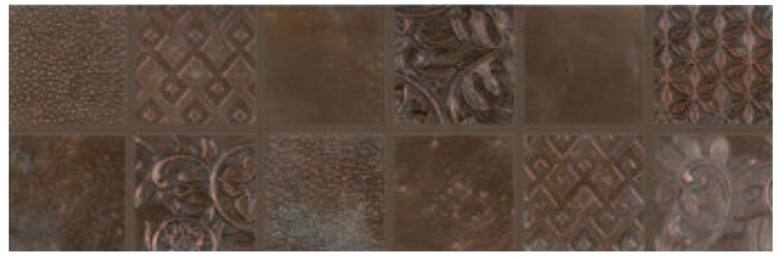
1/2" x 12" Reptile Liner



1-1/4" x 12" Dome Liner



1-3/4" x 12" Chair Rail

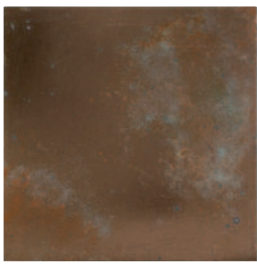


4" x 12" Mosaic Border



*Bronze
Variegated
MX102*

Products featured in photo at left:
 Mixology Bronze Variegated
 6" x 6" Smooth Field Tile,
 1/2" x 12" Leather Liner,
 4" x 4" Leather Deco
 4" x 4" Reptile Deco



4" x 4", 6" x 6" Smooth Field Tile



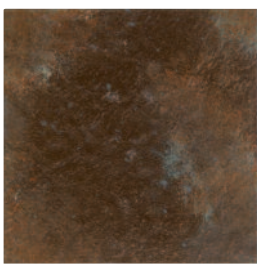
4" x 4", 6" x 6" Floral Medallion Deco



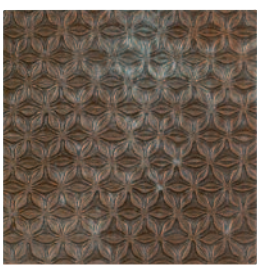
4" x 4", 6" x 6" Vine Deco



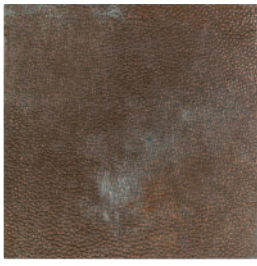
4" x 4", 6" x 6" Links Deco



4" x 4", 6" x 6" Leather Deco



4" x 4", 6" x 6" Starflower Deco



4" x 4", 6" x 6" Reptile Deco



1/2" x 12" Pencil Liner



1/2" x 12" Arrowhead Liner



1/2" x 12" Floral Medallion Liner



1/2" x 12" Vine Liner



1/2" x 12" Links Liner



1/2" x 12" Leather Liner



1/2" x 12" Starflower Liner



1/2" x 12" Reptile Liner



1-1/4" x 12" Dome Liner



1-3/4" x 12" Chair Rail

Iron Nickel
MX103

Products featured in photo at left:
Mixology Iron Nickel
6" x 6" Links Deco



4" x 4", 6" x 6" Smooth Field Tile



4" x 4", 6" x 6" Floral Medallion Deco



4" x 4", 6" x 6" Vine Deco



4" x 4", 6" x 6" Links Deco



4" x 4", 6" x 6" Leather Deco



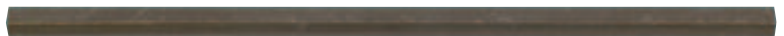
4" x 4", 6" x 6" Starflower Deco



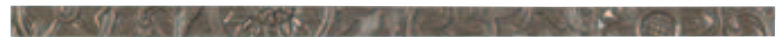
4" x 4", 6" x 6" Reptile Deco



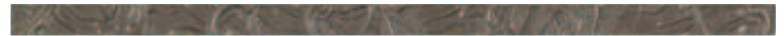
1/2" x 12" Pencil Liner



1/2" x 12" Arrowhead Liner



1/2" x 12" Floral Medallion Liner



1/2" x 12" Vine Liner



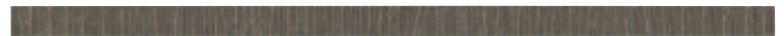
1/2" x 12" Links Liner



1/2" x 12" Leather Liner



1/2" x 12" Starflower Liner



1/2" x 12" Reptile Liner



1-1/4" x 12" Dome Liner



1-3/4" x 12" Chair Rail



4" x 12" Mosaic Border

*Iron Nickel
Variegated
MX104*



Products featured in photo at left:
Mixology Iron Nickel
6" x 6" Links Deco



4" x 4", 6" x 6" Smooth Field Tile



4" x 4", 6" x 6" Floral Medallion Deco



4" x 4", 6" x 6" Vine Deco



4" x 4", 6" x 6" Links Deco



4" x 4", 6" x 6" Leather Deco



4" x 4", 6" x 6" Starflower Deco



4" x 4", 6" x 6" Reptile Deco



1/2" x 12" Pencil Liner



1/2" x 12" Arrowhead Liner



1/2" x 12" Floral Medallion Liner



1/2" x 12" Vine Liner



1/2" x 12" Links Liner



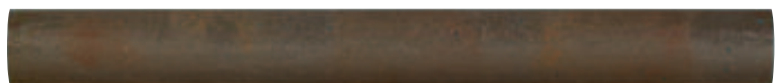
1/2" x 12" Leather Liner



1/2" x 12" Starflower Liner



1/2" x 12" Reptile Liner



1-1/4" x 12" Dome Liner



1-3/4" x 12" Chair Rail



Products featured in photo above: Iron Nickel Variegated – 1-1/4" x 12" Dome Liner, 1/2" x 12" Starflower Liner, 1/2" x 12" Arrowhead Liner, 4" x 12" Mosaic Border (1 row of 2" x 2"), 1/2" x 12" Pencil Liner

Mixology

Certified Recycled Content

The recycled content in Mixology has been certified by Scientific Certification Systems, an independent verifier of environmental claims.



Post-consumer
SCIENTIFIC CERTIFICATION SYSTEMS
SCS-MC-02083



Sizes

Field Tile (Available in all finishes)

Description	Nominal (in)	Thickness (in)
Smooth	4 x 4 & 6 x 6	3/8

Mosaic (Available in all finishes)

Description	Nominal (in)	Thickness (in)
2 x 2 Mosaic Border	4 x 12	varies

Border consists of 2 x 2 pcs., sheet mounted

Coordinating Trim (Available in all finishes)

Description	Nominal (in)	Thickness (in)
Arrowhead Liner	1/2 x 12	varies
Floral Medallion Liner	1/2 x 12	varies
Leather Liner	1/2 x 12	varies
Links Liner	1/2 x 12	varies
Pencil Liner	1/2 x 12	varies
Reptile Liner	1/2 x 12	varies
Starflower Liner	1/2 x 12	varies
Vine Liner	1/2 x 12	varies
Dome Liner	1-1/4 x 12	varies
Chair Rail	1-3/4 x 12	varies
Floral Medallion Deco	4 x 4 & 6 x 6	varies
Leather Deco	4 x 4 & 6 x 6	varies
Links Deco	4 x 4 & 6 x 6	varies
Reptile Deco	4 x 4 & 6 x 6	varies
Starflower Deco	4 x 4 & 6 x 6	varies
Vine Deco	4 x 4 & 6 x 6	varies

NOTE: Due to the handcrafted nature of Mixology, some variation in sizing can be expected.

Care and Maintenance

Regular cleaning is the best way to keep Mixology tile looking good for years to come. Use clean, hot water (combined with a household cleaner for more aggressive cleaning). Rinse thoroughly and dry with a soft cloth. Do not clean with scouring pads, steel wool or other abrasive implements. Rinse thoroughly and dry with a soft cloth to prevent spots. More information regarding the care and maintenance of Crossville® products is available at www.crossvilleinc.com.

Recommended Use

Mixology wall tiles and trim are suitable for interior and exterior vertical applications including kitchen backsplashes, bathroom walls, shower walls, fireplace surrounds, and exterior walls. Mixology tiles are not recommended for swimming pools, spas or hot tubs. Special installation considerations may apply to backsplash applications behind cooktops or fireplace surrounds.

Wet Area Use

Metal/resin tiles can be installed in wet areas such as backsplashes, bathroom walls, and shower enclosures, but are not recommended in swimming pools or hot tubs.

Shade & Texture Index

Mixology has a shade variation of V3.



V1



V2



V3



V4

V1=Uniform Appearance
V2=Slight Variation
V3=Moderate Variation
V4=Substantial Variation