

Vista Americana

PORCELAIN STONE

- Inspired by the great American landscape, Vista Americana captures the warmth of its coast, the romance of its rolling hills, and the grandeur of its mountain ranges.
- Four design-friendly colors and a variety of popular sizes

- Ideal for both commercial and residential applications.
- All colors contain post-industrial recycled content and will last for a lifetime, Vista Americana helps protect the landscape that inspired this new series.



2" x 2" Mosaic

AV181 Dunes



2" x 2" Mosaic

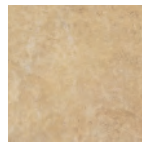
AV182 Foothills



18" x 18"



6" x 18"



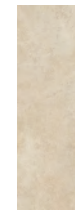
12" x 12"



6" x 6"



18" x 18"



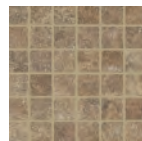
6" x 18"



12" x 12"

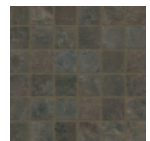
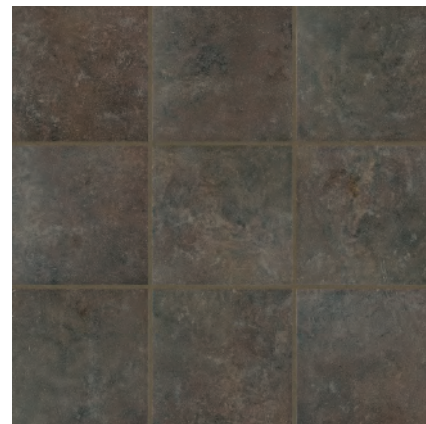


6" x 6"



2" x 2" Mosaic

AV183 Plateau



2" x 2" Mosaic

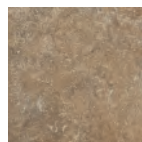
AV184 Palisades



18" x 18"



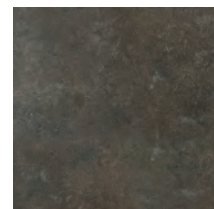
6" x 18"



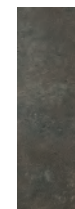
12" x 12"



6" x 6"



18" x 18"



6" x 18"



12" x 12"



6" x 6"

Vista Americana

PORCELAIN STONE

Sizes Available

Nominal (in)	Actual (in)	Thickness (in)	Finish
6 x 6†	5-13/16 x 5-13/16	3/8	UPS
6 x 18†	5-13/16 x 17-13/16	3/8	UPS
12 x 12	11-13/16 x 11-13/16	3/8	UPS
18 x 18	17-13/16 x 17-13/16	3/8	UPS
2 x 2 Mosaics*	11-13/16 x 11-13/16	3/8	UPS

* 2 x 2 mosaic tile in 11-13/16 x 11-13/16 mounted sheets.

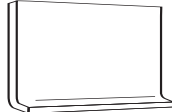
† These sizes are cut down from larger tile resulting in one or more cut edges.

Coordinating Trim (available in all colors)

4 x 12 Single Bullnose	3-3/4 x 11-3/4	3/8	UPS
6 x 12 Cove Base	5-3/4 x 11-3/4	3/8	UPS



4" x 12" Bullnose



6" x 12" Cove Base

Shade & Texture Index

Vista Americana has a shade variation of V4.



V1



V2



V3



V4

V1=Uniform Appearance
V2=Slight Variation
V3=Moderate Variation
V4=Substantial Variation

Recommended Usage

Vista Americana is recommended for interior floors, walls and countertops and exterior walls in both residential and commercial applications. If offset pattern is required on tiles 18 inches or longer, Crossville recommends an offset of not greater than 33%. See crossvilleinc.com for detailed installation instructions.

Care and Maintenance

Regular cleaning is the best way to keep Vista Americana tile looking good for years to come. Use clean, hot water (combined with a household cleaner for more aggressive cleaning). Rinse thoroughly and dry with a soft cloth to prevent water spots. No waxes or sealers are needed. More information regarding the care and maintenance of Crossville products is available at crossvilleinc.com.

Product Performance

Breaking Strength	>450 lbf.	ASTM C648
Bond Strength	>200 psi	ASTM C482
Chemical Resistance	Unaffected	ASTM C650
Frost Resistance	Resistant	ASTM C1026
Water Absorption	<0.10%	ASTM C373
Scratch Hardness	7	MOHs Scale
Coefficient of Friction		
Dry	>0.7	ASTM C1028
Wet	>0.6	ASTM C1028

This product contains post-industrial recycled content. Percentage varies by color.



Pre-consumer
SCS CERTIFIED
Minimum 2%
Recycled Content
SCS-MC02427

AV181 Dunes - 2%
AV182 Foothills - 2%



Pre-consumer
SCS CERTIFIED
Minimum 6%
Recycled Content
SCS-MC02438

AV183 Plateau - 6%



Pre-consumer
SCS CERTIFIED
Minimum 20%
Recycled Content
SCS-MC02439

AV184 Palisades - 18%



Product featured in photo above: AV182 Foothills 2" x 2" Mosaics, AV184 Palisades 6" x 6", 18" x 18"



Product featured in photo above: AV181 Dunes 2" x 2" Mosaic, 12" x 12"

