

Plan

PORCELAIN STONE

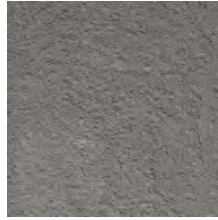
- Excellent option for exterior applications
- Varied designs facilitate unique, visually appealing installations
- Available in 5 sophisticated colors and designs
- Rectified edges for minimalist appeal (6"x 6" has tumbled edge)



PN01 Sand



PN02 Grey



PN03 Smoke



PN04 Black



PN05 Brown

Sizes & Designs Available (shown in Sand)



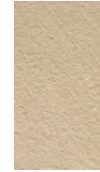
12" x 12"



12" x 24"



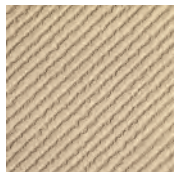
12" x 16" / 12" x 8" Modular



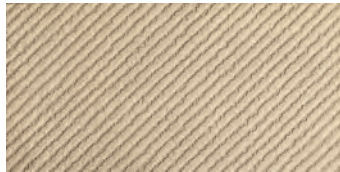
12" x 8"



6" x 6" Tumbled



12" x 12" Diagonal



12" x 24" Diagonal



Brick 3D –
mounted on a 12" x 24" sheet



Mosaic –
mounted on a 12" x 12" sheet



16" x 40" Arco

12" x 24" Palladiana MIX3



Modulo A



Modulo B



Modulo C

Sizes Available (Available in all colors)

| Nominal (in) | Actual Size (mm) | Thickness (mm) | Finish |
|--------------|------------------|----------------|--------|
| 6 x 6 | 147 x 147 | 12 | UP |
| 12 x 8 | 296 x 196 | 12 | UP |
| 12 x 12 | 296 x 296 | 12 | UP |
| 12 x 16 | 296 x 396 | 12 | UP |
| 12 x 24 | 296 x 595 | 12 | UP |

Coordinating Trim Sizes (Available in all colors)

| | | | |
|------------------------|------------|----|----|
| 12 x 12 Mosaic | 296 x 296 | 12 | UP |
| 12 x 24 Brick 3D | 297 x 588 | 12 | UP |
| 12 x 24 Palladiana | 294 x 564 | 12 | UP |
| 16 x 40 Arco | 408 x 1004 | 12 | UP |
| 3 x 12 Single Bullnose | 81 x 296 | 12 | UP |



3" x 12" Single Bullnose

Shade & Texture Index

Plan has a shade variation of V2.



V1



V2



V3



V4

V1=Uniform Appearance
V2=Slight Variation
V3=Moderate Variation
V4=Substantial Variation

Care and Maintenance

Regular cleaning is the best way to keep Plan tile looking good for years to come. For exterior applications, sweep away loose debris, then spray clean with a hose. For transitional areas, use of a stiff bristle brush may be necessary. When occasional

deep cleaning is required for particularly dirty or stained areas, the use of a wet vacuum in conjunction with a stiff bristled deck brush is recommended. There is also an array of power washing and auto scrubbing equipment by Karcher (800) 444-7654 www.karcher-usa.com, Oreck (800) 989-3535 www.oreck.com and Tornado (800) VACUUMS tornadovac.com that can greatly improve the speed and efficiency of cleaning large exterior or transitional surface areas.

Installation Note

Installations pictured were created by blending tile from multiple cartons. Follow the installation instructions provided in product packaging and on our website. If offset pattern is required on tiles 18 inches or longer, Crossville recommends an offset of not greater than 33%. See crossvilleinc.com for detailed installation instructions.

Product Performance

| | | |
|---------------------|-------------|------------|
| Breaking Strength | >1,000 lbf. | ASTM C648 |
| Bond Strength | >100 psi | ASTM C482 |
| Chemical Resistance | Unaffected | ASTM C650 |
| Frost Resistance | Resistant | ASTM C1026 |
| Water Absorption | <0.10% | ASTM C373 |
| Scratch Hardness | 7 | MOHs Scale |
| COF- Dry | >0.8 | ASTMC 1028 |
| COF- Wet | >0.7 | ASTM C1028 |

Recommended Usage

Plan is recommended for exterior floors and walls and interior transitional spaces in commercial and residential applications.





Plan
Product featured in photo: Smoke 12' x 24"

Crossville, Inc. • P.O. Box 1168, Crossville, TN 38557
Phone: 931.484.2110 • Fax: 931.456.2956
E-Mail: crossc@crossvilleinc.com • crossvilleinc.com

 **CROSSVILLE**
ELEVATE YOUR SPACE