

When Precast or Tilt-Up Is Not Possible:

Crossville Porcelain Exterior Cladding may be accomplished by following installation methods when circumstances do not allow precast or tilt-up panel construction:

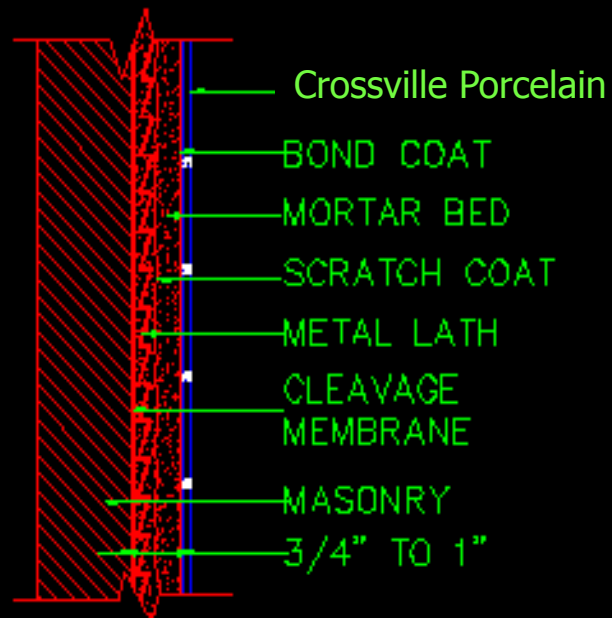
EXTERIOR WALLS

WALLS, EXTERIOR & INTERIOR

Masonry

Cement Mortar

W201-07



Revised 2007; © TCNA

RECOMMENDED USES:

- OVER MASONRY OR CONCRETE ON EXTERIORS

Consult TCNA 2010 handbook detailing all necessary requirements to complete installations, pgs 46-47

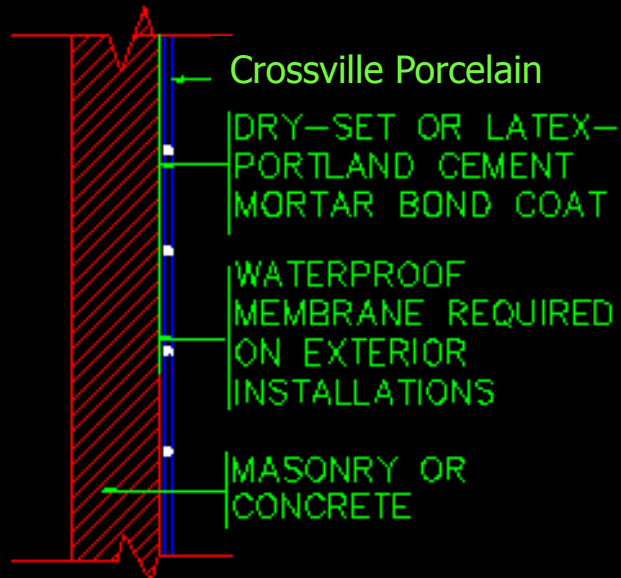
DIAGRAM W201-09

EXTERIOR WALLS

WALLS, EXTERIOR & INTERIOR Masonry

Dry-Set Mortar or Latex-Portland Cement Mortar

W202-07



Revised 2007; © TCNA

RECOMMENDED USES:

- OVER CLEAN, SOUND,
- DIMENSIONALLY STABLE
MASONRY OR CONCRETE.

Consult TCNA 2010 handbook
detailing all necessary
requirements to complete
installations, pgs 46-47

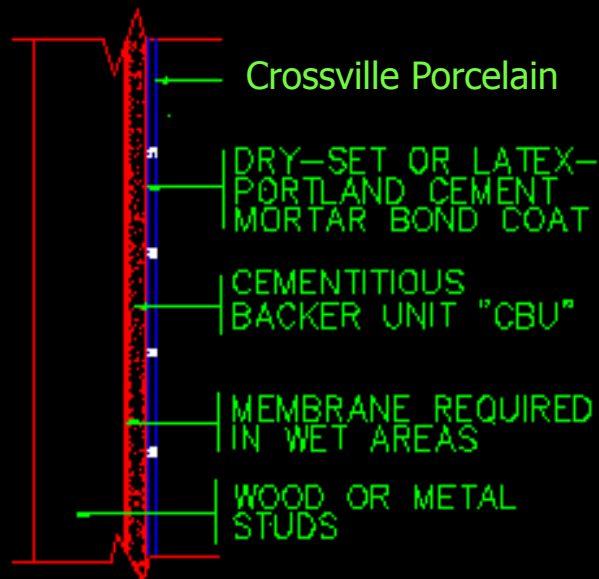
DIAGRAM W202-09

EXTERIOR AND INTERIOR WALLS

WALLS, INTERIOR

Wood or Metal Studs

Cementitious Backer Unit W244C-07



Revised 2007; © TCNA

RECOMMENDED USES:

- OVER DRY, WELL-BRACED WOOD STUDS OR FURRING
- OVER WELL-BRACED METAL STUDS

Consult TCNA 2010 handbook detailing all necessary requirements to complete installations, pgs 46-47

DIAGRAM W244E-09